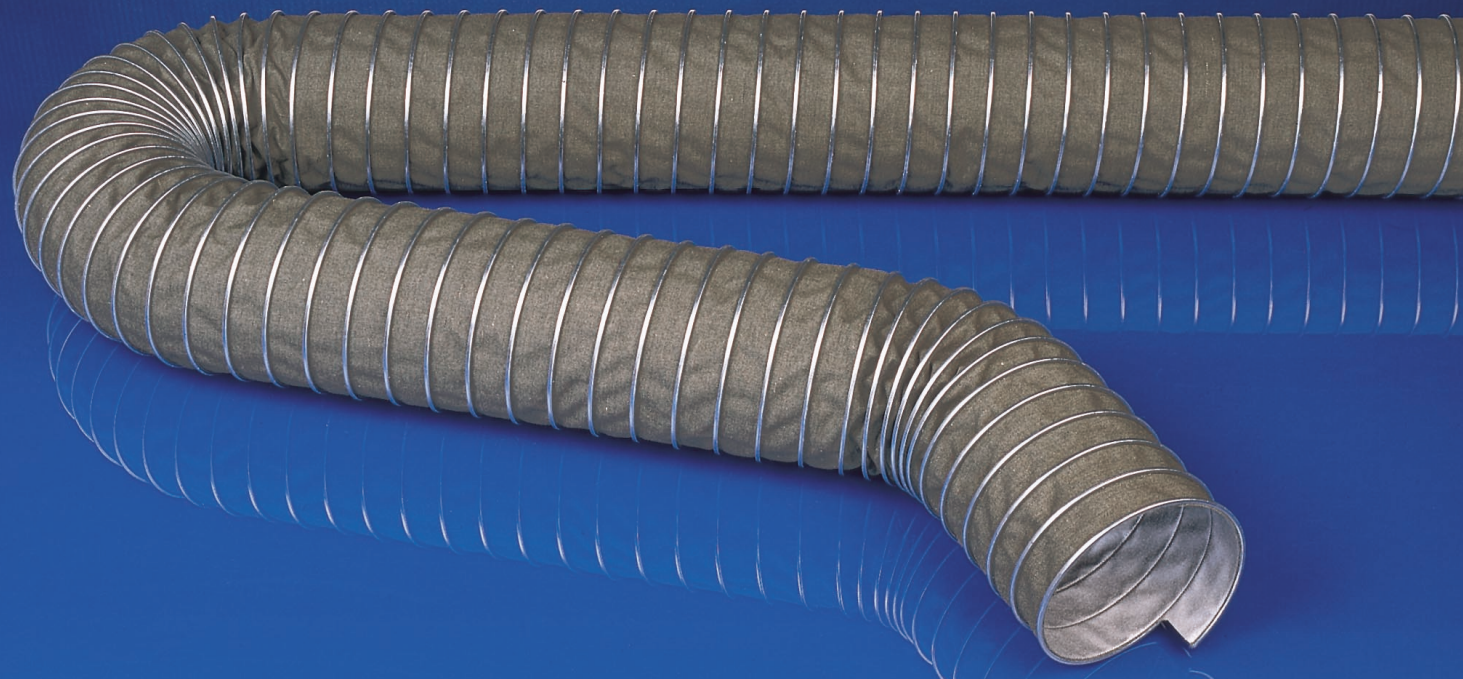


MEDIUM AND HIGH TEMPERATURE HOSE FOR TEMPERATURES UP TO +570°F



5.1.6

MASTER-CLIP CAR

Material

hose wall: special-coated high-temperature fabric
external helix: galvanized steel

Applications

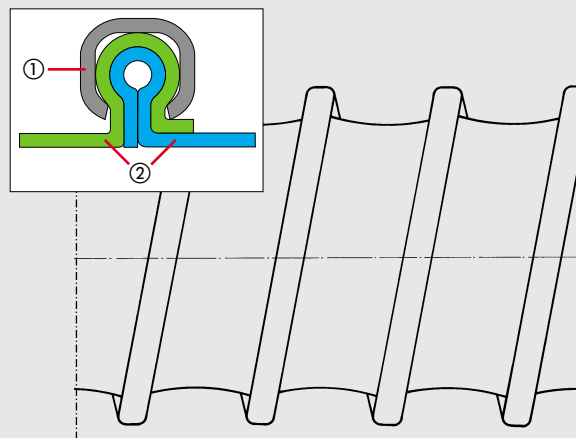
- suction plants
- vehicle and engine construction
- fume exhaustion (especially diesel engine fumes)
- aircraft industries
- defense industries
- general engineering
- hot air
- low pressure applications

Properties

- primarily suited as suction hose
- very good temperature resistance
- flame resistant
- high resistance to mechanical loadings
- vibration resistant
- abrasion resistant
- highly flexible
- extremely compressibility 1:6
- small bend radius
- external steel helix protects against abrasion
- special clamping method guarantees high tensile strength between hose material and external helix

Construction

- ① external helix
- ② hose wall: special-coated high temperature fabric



Temperature Range

- -75°F up to +570°F
- intermittent to +660°F

Technical Data, custom designs and forms of delivery see back page



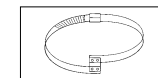
MASTER-CLIP CAR

Dia. (in.)	Positive (in. w.c.)	Negative (in. w.c.)	*Bending radius (in.)	Weight (lbs./ft.)	Product code
1.6	374	144	0.96	0.3355	225-040-120
1.8	370	136	1.08	0.3355	225-045-120
2.0	362	128	1.20	0.3355	225-050-120
2.2	342	106	1.32	0.4026	225-055-120
2.4	313	89	1.44	0.4026	225-060-120
2.6	273	76	1.56	0.4697	225-065-120
2.8	269	64	1.68	0.4697	225-070-120
3.0	249	56	1.80	0.5368	225-075-120
3.2	245	50	1.92	0.5368	225-080-120
3.6	225	40	2.16	0.5368	225-090-120
4.0	205	32	2.40	0.6039	225-100-120
4.4	193	26	2.64	0.6039	225-110-120
4.8	145	22	2.88	0.6710	225-120-120
5.0	133	20	3.00	0.6710	225-125-120
5.2	113	19	3.12	0.7381	225-130-120
5.6	100	16	3.36	0.7381	225-140-120
6.0	88	14	3.60	0.8052	225-150-120
6.4	84	12	3.84	0.8052	225-160-120
6.8	76	11	4.08	0.8723	225-170-120
7.0	74	10	4.20	0.9394	225-175-120
7.2	69	10	5.04	0.9394	225-180-120
8.0	59	8	5.60	1.0736	225-200-120
8.6	51	7	6.04	1.1407	225-215-120
9.0	46	6	6.32	1.2078	225-225-120
10.0	40	5	7.00	1.3420	225-250-120
11.0	32	4	7.72	1.4091	225-275-120
12.0	28	4	8.40	1.4762	225-300-120
12.6	25	3	8.84	1.4762	225-315-120
13.0	24	3	9.12	1.5433	225-325-120
14.0	23	3	9.80	1.7446	225-350-120
15.0	20	2	12.00	1.9459	225-375-120
16.0	19	2	12.80	2.0801	225-400-120
18.0	18	2	14.40	2.4156	225-450-120
20.0	17	1	16.00	2.7511	225-500-120
22.0	17	1	17.60	3.0866	225-550-120
24.0	16	1	19.20	3.4221	225-600-120
28.0	12	1	22.40	4.0260	225-700-120
32.0	9	1	25.60	4.6299	225-800-120
36.0	6	1	28.80	5.2338	225-900-120

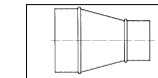
* Referring to the inner side of the elbow of hose.

The above mentioned data refers to an average and ambient temperature of 68°F. Subject to technical changes and color variations. Please refer to technical data sheet when selecting hose.

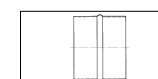
Installation and connection possibilities (see section no. 11 and 12):



CLIP-GRIP special hose clamp for MASTER-CLIP hoses



hose reducer, symmetrical



hose connector

Delivery forms:

Standard production:

- Dia. 1.6" - 3.6"
- Color: inside silver-grey outside green-grey
- Production lengths 10', 25'

Available on request:

- special diameters
- special lengths
- custom design with other pitches and helix sizes
- external helix also in stainless steel or aluminium
- double layer construction with raised vacuum resistance (up to 30 % more than single layer standard hose types)